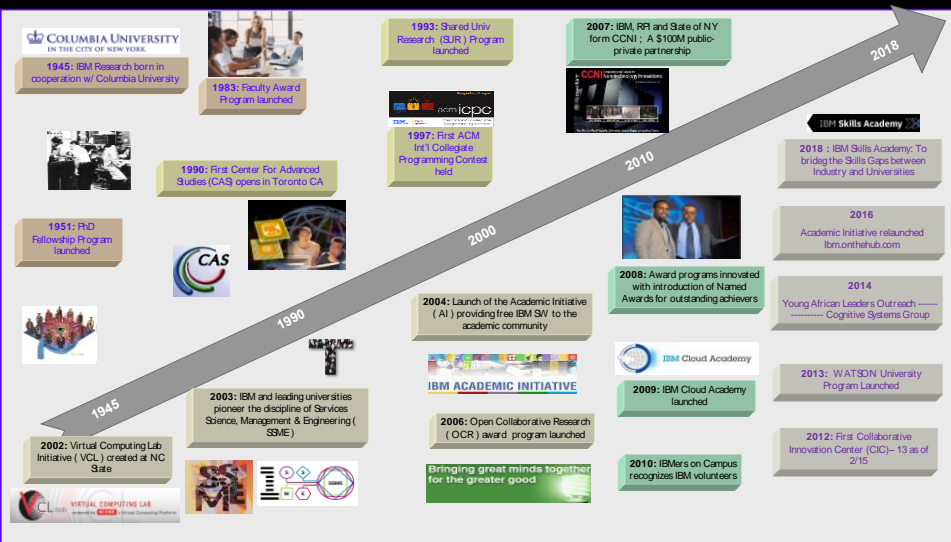


Industry / Science Co-Creation: IBM Viewpoint

Harley Davis
VP, IBM France Lab
harley.davis@fr.ibm.com

IBM has 70+ years of working with universities and public research

In 2017 we reached 4,481 Institutions in 114 countries



IBM R&D

3,000 + researchers in 12 labs located across six continents

60,000 developers in 100 locations, including 600 in France

One of the world's largest and most influential corporate research labs

IBM Patents

Averaged more than 24 patents per day in 2017

#1 annual U.S. patent recipient for 25 consecutive years

9,043 new patents in 2017

IBM Distinctions

IBM is home to:

- 6 Nobel Laureates
- 10 US National Medals of Technology
- 5 US National Medals of Science
- 6 Turing Awards
- 10 Inductees in US Inventors Hall of Fame



IBM's Point of View

Collaborations to solve societal challenges and create innovation

1. MIT and IBM Lab

2. Paris-Saclay Co-Innovation Center

 Emmanuel Macron (@EmmanuelMacron) Follow
From research to practical applications in our daily lives, @IBM is well known for its innovations. @IBM chooses France to take the artificial intelligence forward. #ChooseFrance #AIforhumanity



10:56 am · 29 Mar 2018 From Paris, France

Key challenges that need to be addressed

- Skills
 - IBM France Academy
 - P-Tech
 - Course Curriculum development
- Space
 - Construction
 - Transport
- Incentives
 - Funding
 - IP
 - Publishing

The ownership of co-created knowledge

IBM strongly encourages all joint research to be published

Jointly developed IP should generally be jointly owned or public via open source licenses

- IBM Faculty Awards are not contracts and no intellectual property rights are stipulated as part of a Faculty Award.

- OCR Awards enable IBM and university participants to forge deep relationships through multi-year collaborations; results are free to the public through open source and open standards communities

Talent is created across organisational boundaries

Using the example of Paris-Saclay, IBM is committed to improving talent across organizational boundaries

- Employment: Team up to advance research projects
- Skills:
 - Transfer skills by relocating researchers to France. Develop exchanges with the IBM Research Network
 - Leverage new French ability to have public researchers spend time in industry

Thank You!

